

EMCA #4 February 2014 Results

(out of 18 max)

- 17 Susie Wang (Derbyshire)
16 Max Miller (Northants)
15 Harry Madden (Derbyshire)
13 Shyam Modi (Leicestershire)
12 Ben Gilpin (Notts), Kishan Modi (Leics) & Ben Raine (Leics)
11 Zakary Hobbs-Iskander (Notts), Rachael Raine (Leics) & Leann Stewart (Notts)
8 Noah Moore (Derbys)

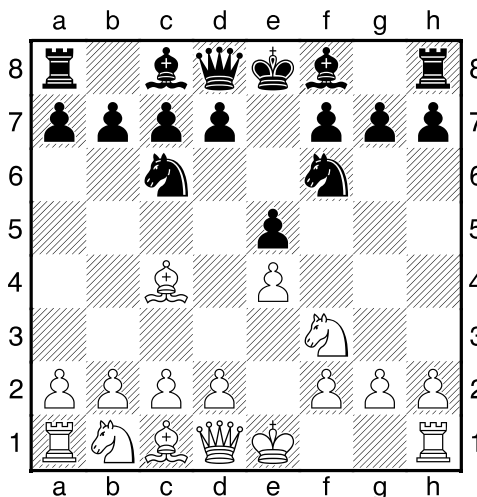
Overall Grand Prix (out of 72 max)

- 59 Susie Wang (Derbyshire)
58 Harry Madden (Derbyshire)
39 Shyam Modi (Leicestershire)
35 Kishan Modi (Leicestershire)
33 Adam Bennett (Notts)

Long Forgotten Weapons #27

The Boden-Kieseritzky Gambit

1.e4 e5 2.Nf3 Nc6 3.Bc4 Nf6



4.0-0!? White offers the gambit of a pawn for rapid development. White's standard moves here are **4.Ng5** heading for a Fried Liver, **4.d3**, and the languid **4.Nc3** which allows **4...Nxe4 5.Nxe4 d5 6.Bd3 dxe4 7.Bxe4 Bd6 8.d4 exd4 9.Bxc6+ bxc6 10.Qxd4** with equal chances

4...Nxe4 5.Nc3 The Boden-Kieseritzky Gambit.

5...Nxc3 6.dxc3 f6!?

or **6...Be7 7.Qd5 o-o 8.Nxe5 Nxe5 9.Qxe5 Bf6 10.Qh5 c6** with a roughly level position.

7.Nh4 g6 8.f4! Qe7 9.Kh1 d6 10.f5

and White holds the initiative.

© CD 2014



East Midlands Chess Academy Junior Training Tournaments



£100 1st Prize in our Grand Prix
(Best 6 results out of 8 to count)

Sundays, 11am - 6pm, on

25 May 2014 @ Risley

8 June @ Risley

29 June @ Bramcote

13 July @ Risley

Venues

Risley Village Hall, 18 Derby Road, Risley, Derbys DE72 3SU

Bramcote Memorial Hall, Church Street, Bramcote, Nottm NG9 3HD

East Midlands Chess Junior Academy Training Tournaments are open to all children **U13 & U130 grade** (i.e. Year 8 and under).

6-Round Swiss, so each child plays six games, regardless of results.
A first round bye is available, if needed.

In most junior chess events you play just 6 games of chess, where parents retain supervisory responsibility for the duration. At EMC junior events we **supervise** the children for the seven hours, so parents can drop their children off at 11am and pick them up at 6pm. We also provide chess **training** in-between games, and throughout the day.

We use the **UKCC scoring system** of 3 points for a win, 2 for a draw, and 1 for a loss.

£20 Entry Fee per child, which includes **training** in-between games, **supervision** and **prizes** to be won.

They are also the final four events in our new **EMC Grand Prix** which comprises eight events over the academic year. Your best six scores will count, with the overall Grand Prix winner receiving **£100**.

These events will be run under the supervision of **ECF National Coaches Christopher Dunworth** and **David Levens**, who is also the ECF National Manager of Coaches & England Junior Selector. **And don't forget to bring a packed lunch & drink!**

Chess Study & Websites

www.chesskid.com

Play Online & Study

www.ideachess.com

Checkmate, Endgame & Tactics Training

www.chesskids.org.uk

Online Chess Lessons from Richmond

www.chessbase.com

Global Chess News with Annotated Games in Java

www.chesscoach.co.uk

David Levens' Chess Coaching Website

www.englishchess.org.uk

The Website of the National Federation

www.yes2chess.org/uk/

The Home of a new schools' Internet Chess Community brought to you by Chess in Schools and Communities and Barclaycard

www.mccu.org.uk

Midlands Chess Union Website

East Midlands Chess

Chess Clubs in Schools – Private

1:to:1 Tuition – Junior Training

Tournaments – Pop Up Chess

From Absolute Beginners

to National Champions

Christopher Dunworth 07577-273275

David Levens 07870-666153

eastmidlandschess@gmail.com

www.eastmidlandschess.co.uk

Reinventing Chess Structure

EMC Junior Chess Academy Training Tournament

Date(s) of Event:

Name of Child:

School Year:

School Attended:

Grade:

Home Address:

Email Address:

Emergency contact telephone:

Name of Parent:

To enter the event you can pay £20 online, and email the form (dunworth@talk21.com) to us;

BHJCC 30-98-74 03097514
Lloyds TSB Bank

Please give name of child and date of event as reference.

Alternatively you can pay by cheque (£20, payable to BHJCC) and mail back to: **East Midlands Chess, 54 Wolfa Street, Derby DE22 3SD**